

Total Fitter Hours by Fitter

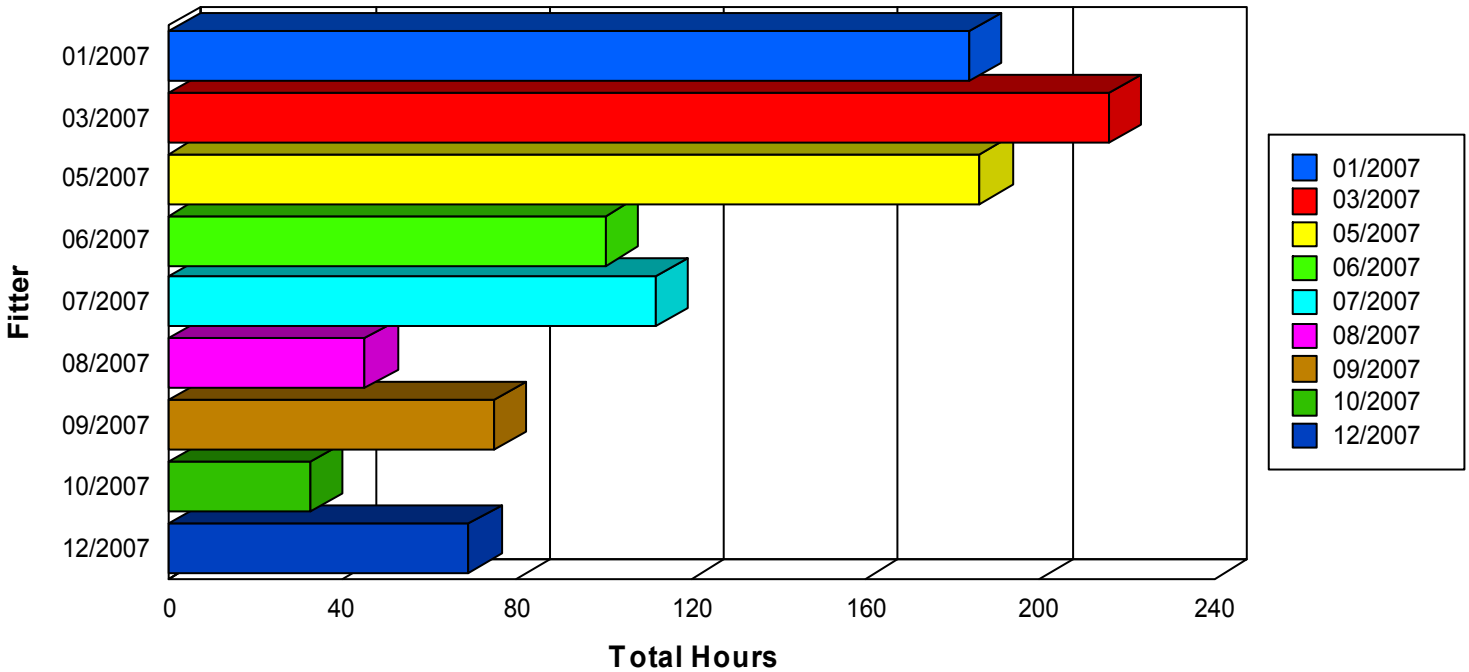


This report shows the total number of hours completed by each fitter for each Month based on the Date Costed range selected. A new page started for each Fitter. Double click on a Month to view the Job Card data.

www.PerthCrest.com.au

July 12, 2008

Total Hours by Month For AC



Fitter : AC

	Hours	Labour	Parts	Total
Month : 01/2007	183.70	\$5,051.76	\$2,227.76	\$7,279.52
Month : 03/2007	215.88	\$5,936.83	\$2,193.75	\$8,130.58
Month : 05/2007	186.17	\$5,119.59	\$2,519.78	\$7,639.37
Month : 06/2007	100.33	\$2,759.18	\$1,481.87	\$4,241.05
Month : 07/2007	111.87	\$3,132.26	\$1,615.12	\$4,747.38
Month : 08/2007	45.12	\$1,263.27	\$362.82	\$1,626.09
Month : 09/2007	74.63	\$2,089.74	\$3,059.22	\$5,148.96
Month : 10/2007	32.58	\$912.33	\$177.64	\$1,089.97
Month : 12/2007	68.93	\$1,930.13	\$1,647.87	\$3,578.00

Fitter : AC

1,019.22

\$28,195.09

\$15,285.83

\$43,480.92

Total Fitter Hours by Fitter

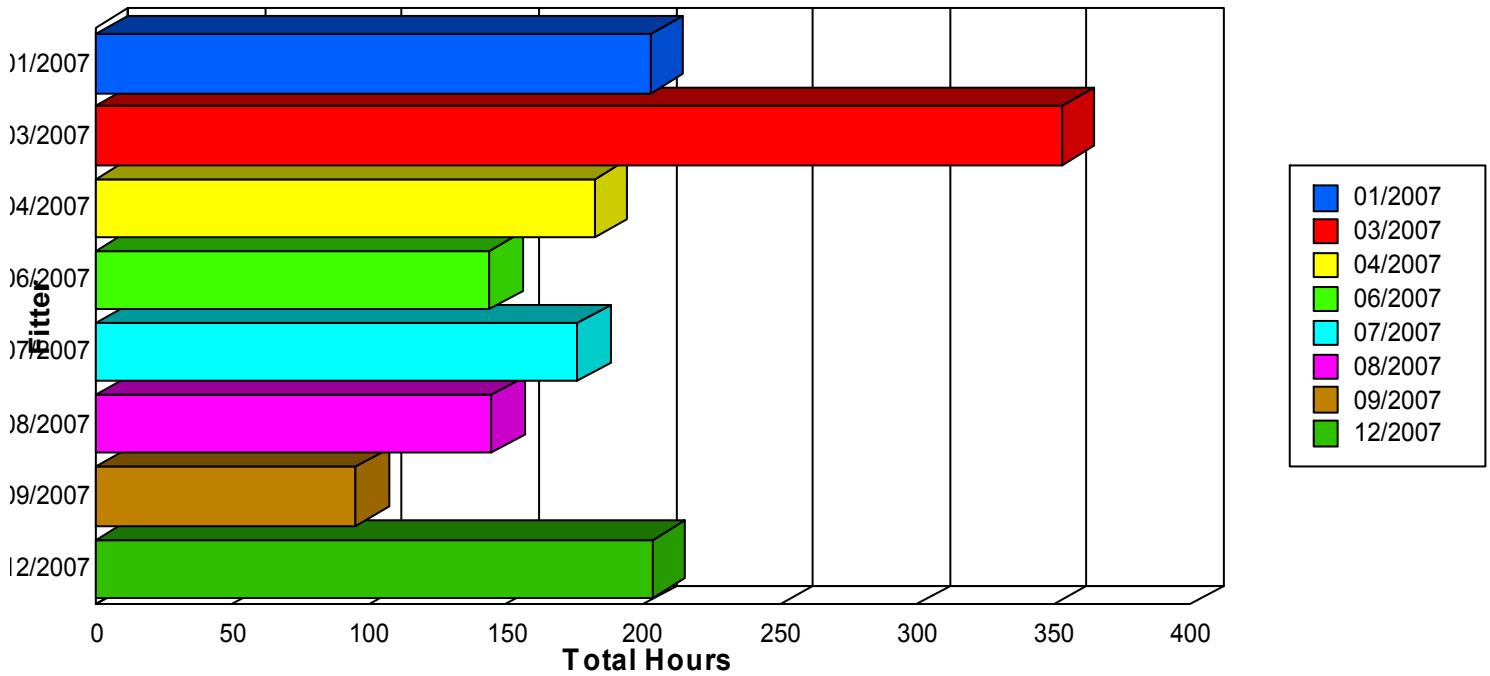


This report shows the total number of hours completed by each fitter for each Month based on the Date Costed range selected. A new page started for each Fitter. Double click on a Month to view the Job Card data.

www.PerthCrest.com.au

July 12, 2008

Total Hours by Month For AW



Fitter : **AW**

	Hours	Labour	Parts	Total
Month : 01/2007	202.78	\$3,980.54	\$181.10	\$4,161.64
Month : 03/2007	352.92	\$6,925.22	\$458.00	\$7,383.22
Month : 04/2007	182.20	\$3,552.91	\$207.50	\$3,760.41
Month : 06/2007	144.02	\$2,808.33	\$647.50	\$3,455.83
Month : 07/2007	176.28	\$3,523.10	\$298.89	\$3,821.99
Month : 08/2007	144.87	\$2,883.27	\$169.58	\$3,052.85
Month : 09/2007	95.00	\$1,852.50	\$182.51	\$2,035.01
Month : 12/2007	203.50	\$4,019.36	\$294.20	\$4,313.56

Fitter : AW	1,501.57	\$29,545.23	\$2,439.28	\$31,984.51
--------------------	----------	-------------	------------	-------------

Total Fitter Hours by Fitter

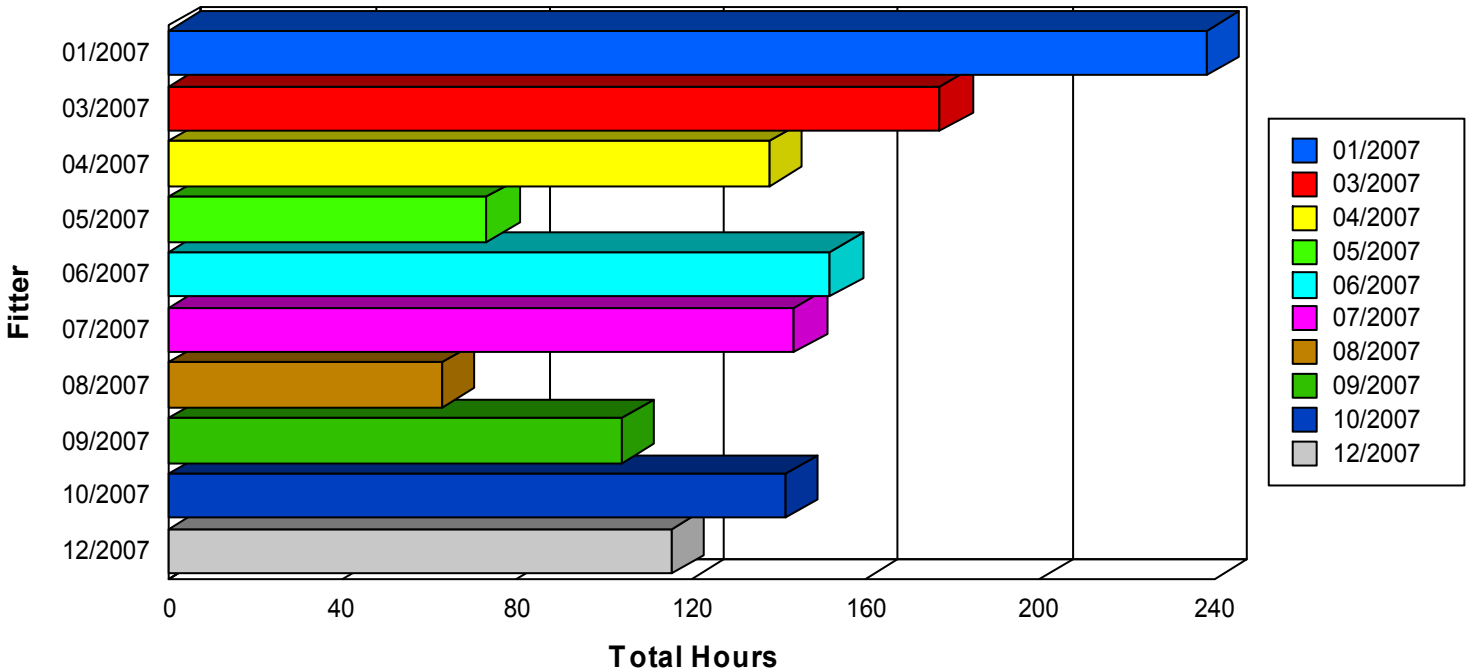


This report shows the total number of hours completed by each fitter for each Month based on the Date Costed range selected. A new page started for each Fitter. Double click on a Month to view the Job Card data.

www.PerthCrest.com.au

July 12, 2008

Total Hours by Month For BK



Fitter : **BK**

	Hours	Labour	Parts	Total
Month : 01/2007	238.20	\$6,550.52	\$4,693.38	\$11,243.90
Month : 03/2007	177.15	\$4,815.21	\$2,036.51	\$6,851.72
Month : 04/2007	137.98	\$3,794.60	\$2,915.69	\$6,710.29
Month : 05/2007	73.07	\$2,009.33	\$991.16	\$3,000.49
Month : 06/2007	151.80	\$4,163.30	\$1,585.51	\$5,748.81
Month : 07/2007	143.73	\$4,024.54	\$4,987.48	\$9,012.02
Month : 08/2007	62.88	\$1,760.74	\$389.25	\$2,149.99
Month : 09/2007	103.98	\$2,911.55	\$564.76	\$3,476.31
Month : 10/2007	141.52	\$3,962.47	\$2,473.32	\$6,435.79
Month : 12/2007	115.53	\$3,229.53	\$641.08	\$3,870.61

Fitter : **BK**

1,345.85

\$37,221.79

\$21,278.14

\$58,499.93