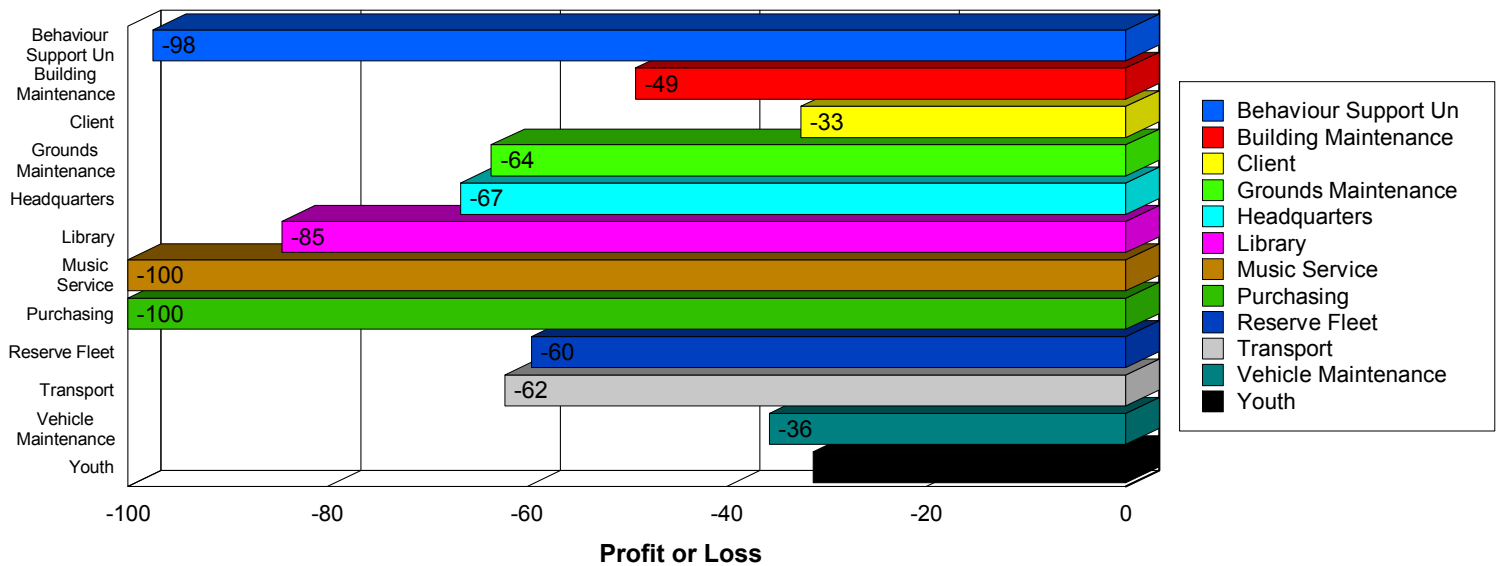


Percentage Profit / Loss by Operator / Dept



Recorded vs Charged Cost by Operator or Department



This report looks at all jobs completed between selected dates 1/01/2005 and 31/12/2005. It then compares the recorded cost of a job versus the charged cost to give a profit and loss for each Operator / Department. You can double click on an Operator to Drill-Down to the individual jobs records. Any figures in red show a loss.

July 14, 2008

www.PerthCrest.com.au

	Recorded Cost	Charged Cost	Profit/Loss	% Profit
Behaviour Support Un	\$95,880.35	\$124.65	\$-95,755.70	-97.50
Building Maintenance	\$13,564.28	\$7,038.61	\$-6,525.67	-49.15
Client	\$70,552.04	\$55,246.66	\$-15,305.38	-32.56
Grounds Maintenance	\$49,413.76	\$13,395.65	\$-36,018.11	-63.59
Headquarters	\$5,485.05	\$1,496.60	\$-3,988.45	-66.67
Library	\$155,753.95	\$15,624.48	\$-140,129.47	-84.57
Music Service	\$3,668.25	\$0.00	\$-3,668.25	-100.00
Purchasing	\$19,786.78	\$0.00	\$-19,786.78	-100.00
Reserve Fleet	\$1,764,011.61	\$799,030.27	\$-964,981.34	-59.57
Transport	\$2,599,532.94	\$1,018,506.03	\$-1,581,026.91	-62.25
Vehicle Maintenance	\$11,266.14	\$9,504.46	\$-1,761.68	-35.71
Youth	\$31,978.05	\$27,392.12	\$-4,585.93	-31.33
Grand Totals :	\$4,820,893.20	\$1,947,359.53	\$-2,873,533.67	-62.20