

Total Fitter Hours by Month

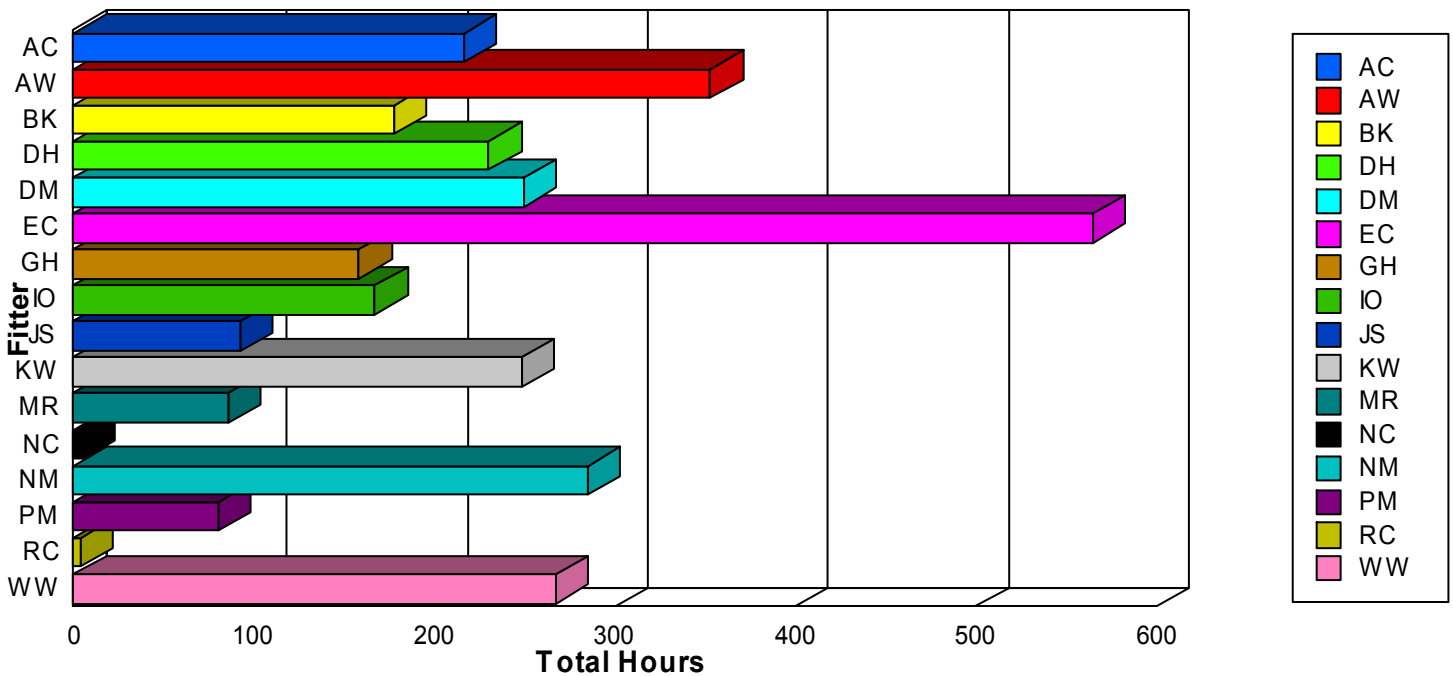


This report shows the total number of hours completed by each fitter for each Month based on the Date Costed range selected. A new page started for each Month. Double click on a Fitter to view the Job Card data.

www.PerthCrest.com.au

July 12, 2008

Total Hours by Month For 03/2007



Month Starting : 03/2007

Fitter	Hours	Labour	Parts	Total
Fitter : AC	215.88	\$5,936.83	\$2,193.75	\$8,130.58
Fitter : AW	352.92	\$6,925.22	\$458.00	\$7,383.22
Fitter : BK	177.15	\$4,815.21	\$2,036.51	\$6,851.72
Fitter : DH	229.98	\$6,324.56	\$1,574.56	\$7,899.12
Fitter : DM	249.10	\$6,850.28	\$4,544.25	\$11,394.53
Fitter : EC	564.63	\$15,527.43	\$2,667.70	\$18,195.13
Fitter : GH	158.22	\$4,350.97	\$1,679.20	\$6,030.17
Fitter : IO	166.88	\$4,589.30	\$3,221.13	\$7,810.43
Fitter : JS	92.08	\$2,532.31	\$808.99	\$3,341.30
Fitter : KW	247.98	\$6,819.63	\$5,038.21	\$11,857.84
Fitter : MR	85.50	\$2,351.25	\$565.00	\$2,916.25
Fitter : NC	4.75	\$125.40	\$115.12	\$240.52
Fitter : NM	284.60	\$7,826.54	\$6,531.46	\$14,358.00
Fitter : PM	80.30	\$2,208.25	\$1,143.85	\$3,352.10
Fitter : RC	3.90	\$107.26	\$18.16	\$125.42
Fitter : WW	267.15	\$7,346.63	\$2,453.51	\$9,800.14

Month Starting : 03/2007

3,181.03

\$84,637.07

\$35,049.40

\$119,686.47

Total Fitter Hours by Month



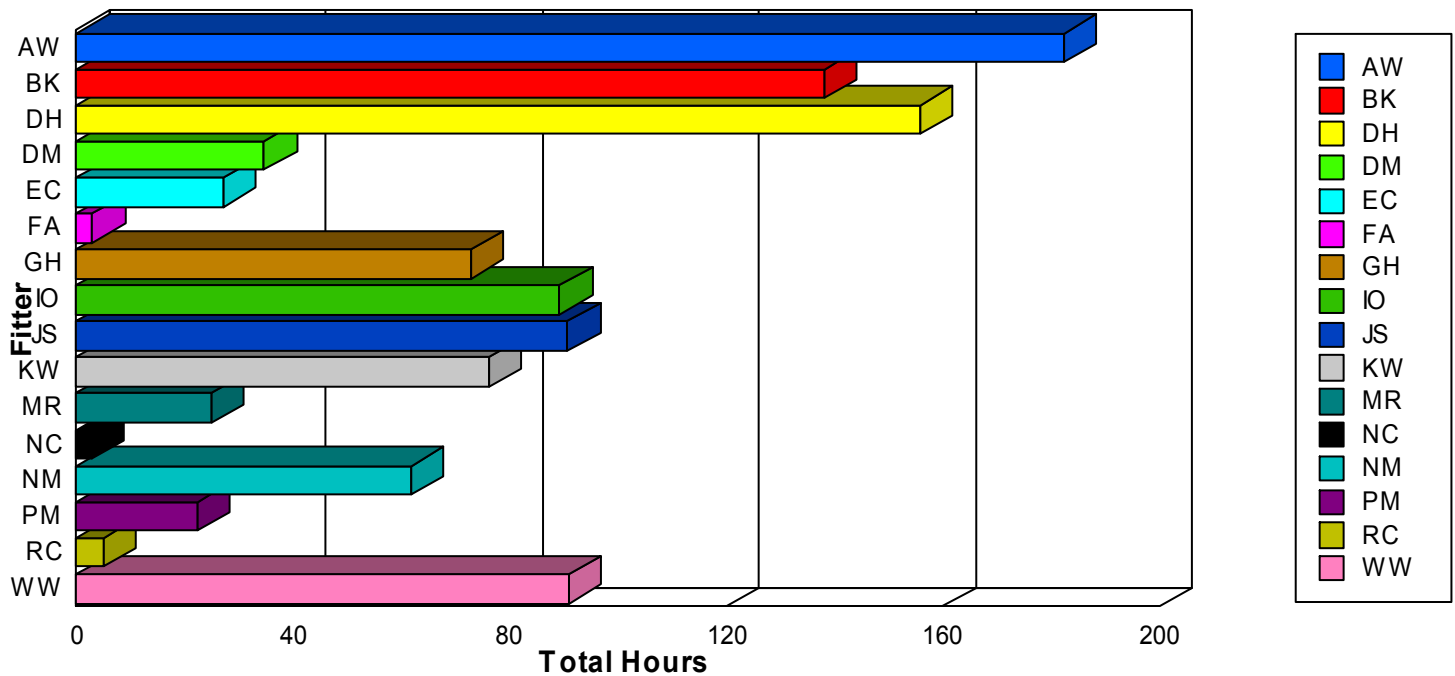
This report shows the total number of hours completed by each fitter for each Month based on the Date Costed range selected. A new page started for each Month. Double click on a Fitter to view the Job Card data.

www.PerthCrest.com.au

July 12, 2008

Total Hours by Month

For 04/2007



Month Starting : 04/2007

Fitter	Hours	Labour	Parts	Total
Fitter : AW	182.20	\$3,552.91	\$207.50	\$3,760.41
Fitter : BK	137.98	\$3,794.60	\$2,915.69	\$6,710.29
Fitter : DH	155.72	\$4,201.32	\$1,161.54	\$5,362.86
Fitter : DM	34.70	\$954.25	\$138.82	\$1,093.07
Fitter : EC	27.02	\$742.96	\$330.19	\$1,073.15
Fitter : FA	3.00	\$82.50	\$0.00	\$82.50
Fitter : GH	72.85	\$2,003.38	\$907.99	\$2,911.37
Fitter : IO	89.20	\$2,453.00	\$859.01	\$3,312.01
Fitter : JS	90.73	\$2,495.19	\$1,863.85	\$4,359.04
Fitter : KW	76.03	\$2,090.93	\$91.39	\$2,182.32
Fitter : MR	25.00	\$687.50	\$503.01	\$1,190.51
Fitter : NC	2.75	\$75.63	\$0.00	\$75.63
Fitter : NM	61.72	\$1,697.21	\$652.58	\$2,349.79
Fitter : PM	22.25	\$611.88	\$642.29	\$1,254.17
Fitter : RC	4.87	\$133.83	\$47.10	\$180.93
Fitter : WW	90.82	\$2,497.46	\$950.29	\$3,447.75

Month Starting : 04/2007

1,076.83

\$28,074.55

\$11,271.25

\$39,345.80

Total Fitter Hours by Month

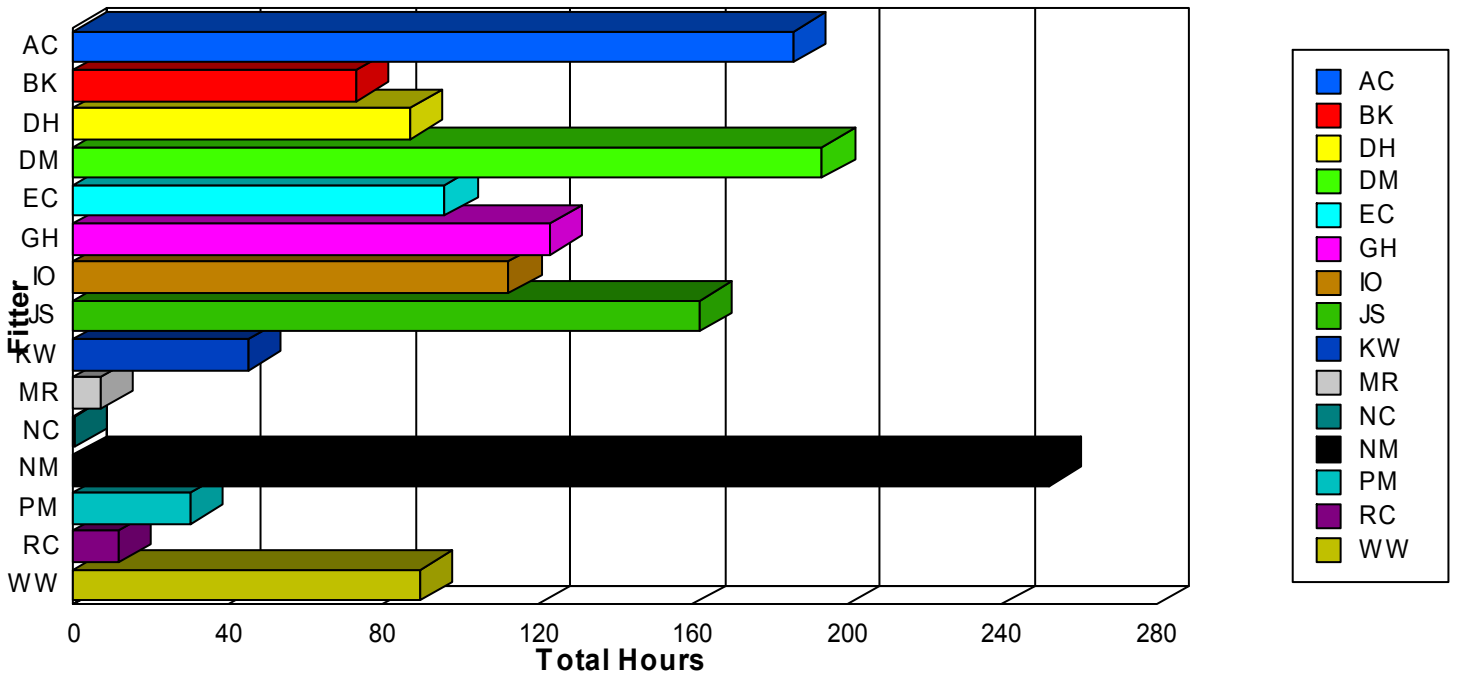


This report shows the total number of hours completed by each fitter for each Month based on the Date Costed range selected. A new page started for each Month. Double click on a Fitter to view the Job Card data.

www.PerthCrest.com.au

July 12, 2008

Total Hours by Month For 05/2007



Month Starting : 05/2007

Fitter	Hours	Labour	Parts	Total
Fitter : AC	186.17	\$5,119.59	\$2,519.78	\$7,639.37
Fitter : BK	73.07	\$2,009.33	\$991.16	\$3,000.49
Fitter : DH	87.02	\$2,392.96	\$1,459.24	\$3,852.20
Fitter : DM	193.60	\$5,324.02	\$3,984.33	\$9,308.35
Fitter : EC	95.98	\$2,639.54	\$431.34	\$3,070.88
Fitter : GH	123.20	\$3,387.99	\$3,191.80	\$6,579.79
Fitter : IO	112.47	\$3,092.83	\$2,442.66	\$5,535.49
Fitter : JS	161.90	\$4,452.24	\$570.63	\$5,022.87
Fitter : KW	45.10	\$1,240.28	\$1,048.13	\$2,288.41
Fitter : MR	7.00	\$192.50	\$339.35	\$531.85
Fitter : NC	0.25	\$6.88	\$61.86	\$68.74
Fitter : NM	252.07	\$6,931.86	\$3,739.82	\$10,671.68
Fitter : PM	30.30	\$833.25	\$277.44	\$1,110.69
Fitter : RC	11.53	\$317.17	\$491.02	\$808.19
Fitter : WW	89.50	\$2,461.25	\$860.06	\$3,321.31

Month Starting : 05/2007

1,469.15 \$40,401.69 \$22,408.62 \$62,810.31