

# Make/Model Analysis by Division or Department

Wednesday, 18 June 2008

The information in this report is for Period 09

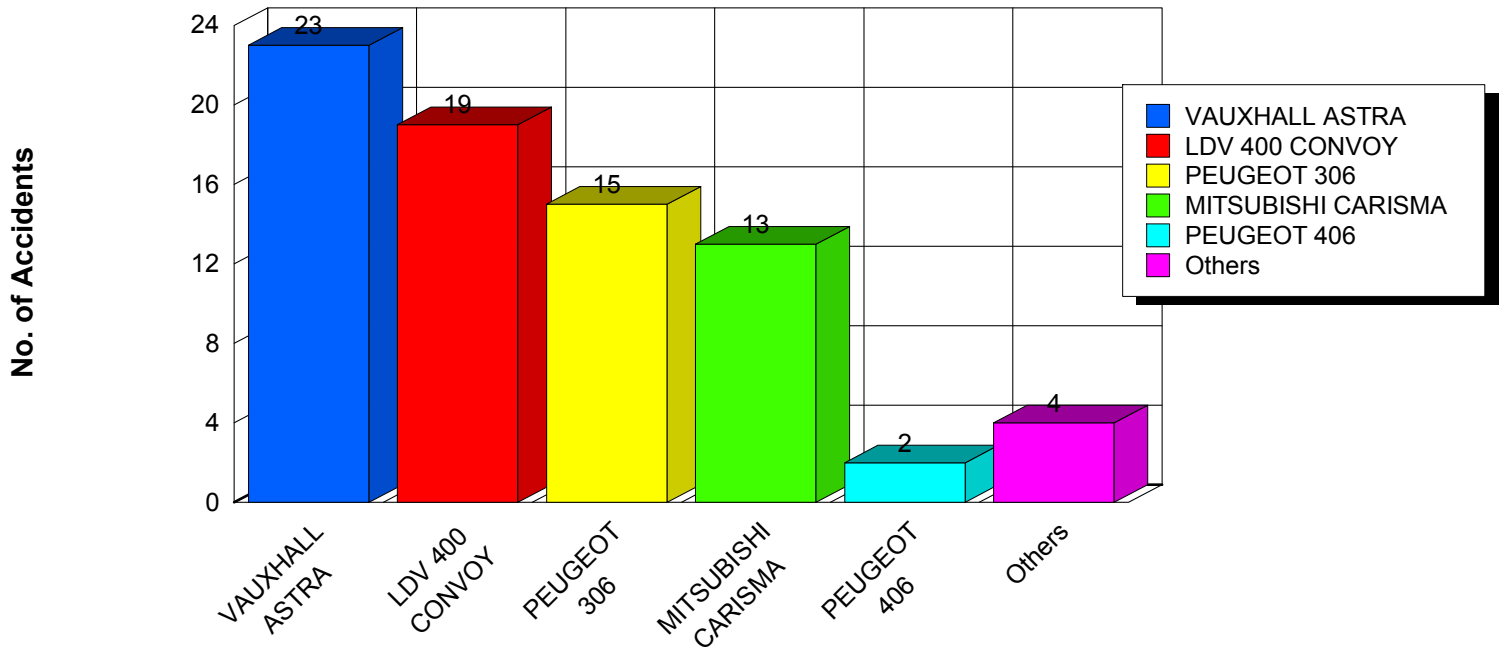


This report shows a graph of the top 5 vehicle types which experienced accidents in the chosen period. Other vehicle types are shown in the last bar. Each page shows accidents for your Division or Department. A costing summary is shown below and you can double click and drill down to the actual accident records to view the detail.

[www.PerthCrest.com.au](http://www.PerthCrest.com.au)

A Division

## No. of Accidents by Make/Model



Make/Model	No. of Accidents	Cost
VAUXHALL ASTRA	23	\$3,308.00
LDV 400 CONVOY	19	\$3,266.10
PEUGEOT 306	15	\$8,259.07
MITSUBISHI CARISMA	13	\$7,152.38
PEUGEOT 406	2	\$289.50
Others	4	\$1,050.34
<b>A Division</b>	<b>76</b>	<b>\$23,325.39</b>

# Make/Model Analysis by Division or Department

Wednesday, 18 June 2008

The information in this report is for Period 09

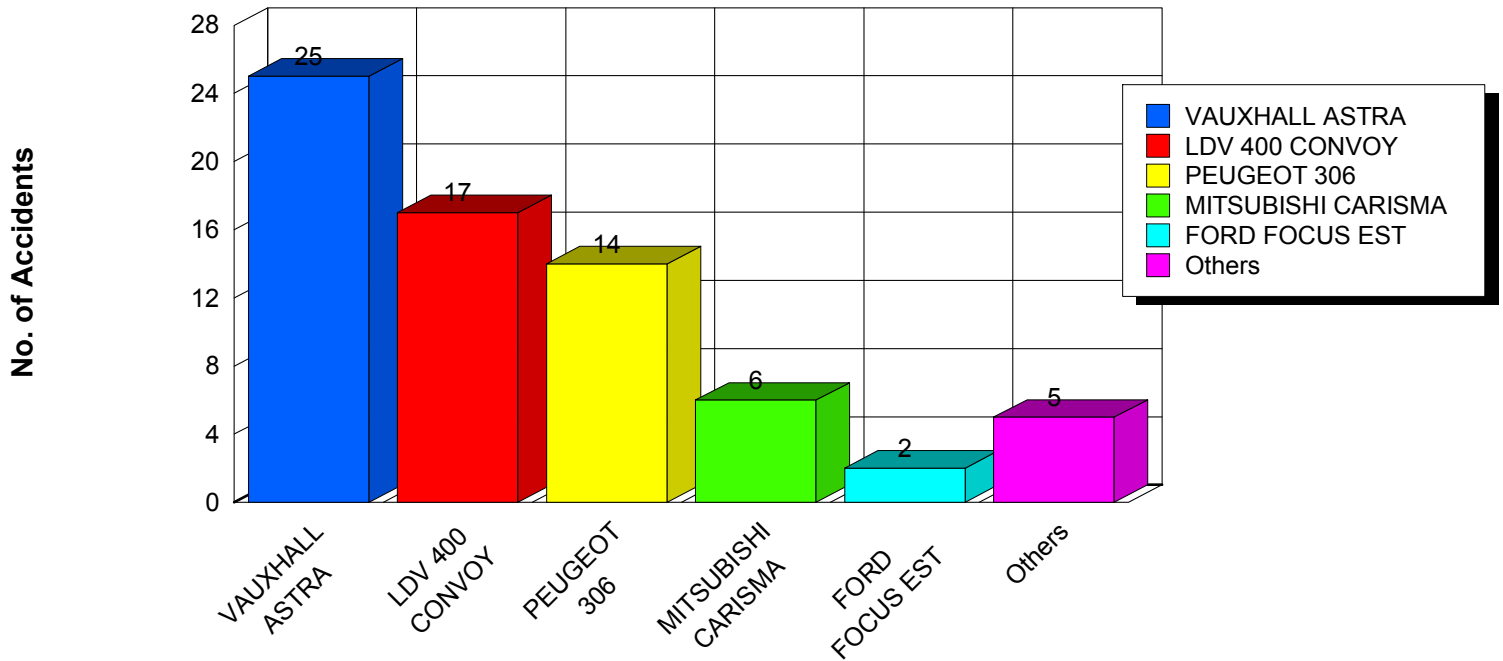


This report shows a graph of the top 5 vehicle types which experienced accidents in the chosen period. Other vehicle types are shown in the last bar. Each page shows accidents for your Division or Department. A costing summary is shown below and you can double click and drill down to the actual accident records to view the detail.

[www.PerthCrest.com.au](http://www.PerthCrest.com.au)

B Division

## No. of Accidents by Make/Model



Make/Model	No. of Accidents	Cost
VAUXHALL ASTRA	25	\$6,442.84
LDV 400 CONVOY	17	\$4,527.62
PEUGEOT 306	14	\$5,207.67
MITSUBISHI CARISMA	6	\$2,397.49
FORD FOCUS EST	2	\$180.00
Others	5	\$2,596.24
<b>B Division</b>	<b>69</b>	<b>\$21,351.86</b>